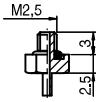
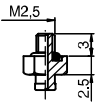
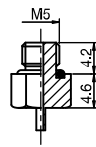
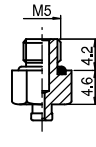
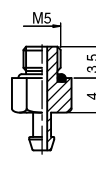
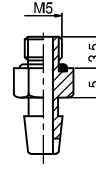
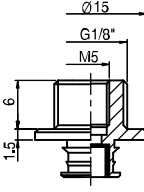
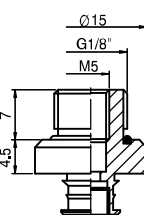
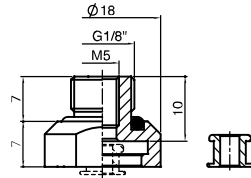


Fittings (Option)

M2.5-M		VU2 , VU3	Code No. : 350 000 3000
M2.5-M		VU3K	Code No. : 350 000 3006
M5-M		VU2 , VU3	Code No. : 350 000 3100
M5-M		VU3K	Code No. : 350 000 3106
M5-M		VU4, VU6, VU8 VB5, VB8	Code No. : 350 000 3101
M5-M		VU10, VU15, VF15 VB10, VB12, VB15	Code No. : 350 000 3102
M518-MF		VU20, VU25, VU30 VF20, VF25, VF30 VB17, VB20 VBL20	Code No. Standard - 350 000 3209 Built in mesh-filter - 350 000 5209 Built in efficiency valve - 350 010 4209
M5/18-MFO		VU20, VU25, VU30 VF20, VF25, VF30 VB17, VB20 VBL20	Code No. Standard - 350 000 1209 Built in mesh-filter - 350 000 1109 Built in efficiency valve - 350 010 1209

Fittings (Option)

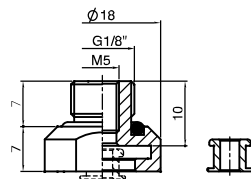
M5/18MFX
(For silicone Mat'l)



VU20, VU25, VU30
VF20, VF25, VF30

Code No. : 350 000 3229

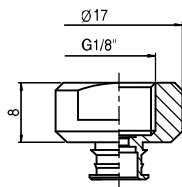
M5/18MFB
(For silicone Mat'l)



VB17
VB20, VBL20

Code No. : 350 000 3239

18-F

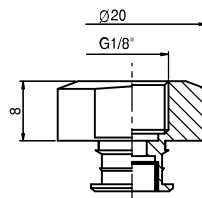


VU20, VU25, VU30
VF20, VF25, VF30
VB17, VB20
VBL20

Code No.

Standard - 350 000 3310
Built in mesh-filter - 350 000 4310
Built in efficiency valve - 350 010 3310

18-F

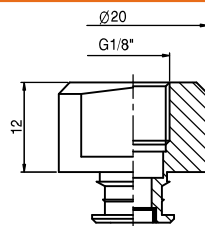


VU40
VF40
VB30, VB40
VBL30, VBL40

Code No.

Standard (Built in mesh-filter) - 350 000 3311
Built in efficiency valve - 350 010 3311

18-F

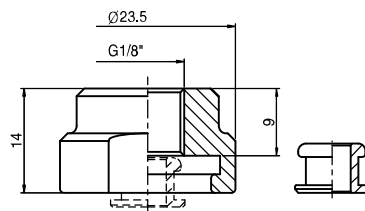


VU40
VF40
VB30, VB40
VBL30, VBL40

Code No.

Standard (Built in mesh-filter) - 350 000 2311

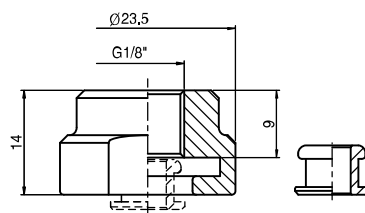
18-FX
(For silicone Mat'l)



VU40, VF40

Code No. : 350 000 3321

18-FB
(For silicone Mat'l)



VB30, VB40
VBL30, VBL40

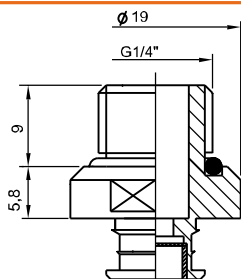
Code No. : 350 000 3331

Fittings (Option)

18-F KPS 1		KPS 1	Code No. Standard (Built in mesh-filter) - 350 000 3350
18-F KPS 5		KPS 5, KPS 5-15	Code No. Standard (Built in mesh-filter) - 350 000 3351
18-F KPS 9		KPS 9	Code No. Standard (Built in mesh-filter) - 350 000 3352
18-M		VU40 VF40 VB30, VB40 VBL30, VBL40	Code No. Standard (Built in mesh-filter) - 350 000 2304 Built in efficiency valve - 350 010 2304
18-F		VU50 VF50 VB50 VBL50	Code No. Standard (Built in mesh-filter) - 350 000 1312 Built in efficiency valve - 350 010 1312
18-F		VU50 VF50 VB50 VBL50	Code No. Standard (Built in mesh-filter) - 350 000 3312 Built in efficiency valve - 350 010 3312

Fittings (Option)

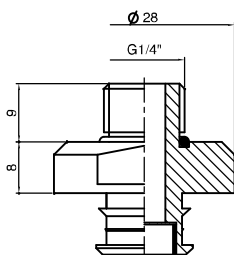
14-M



VU40
VF40
VB30, VB40
VBL30, VBL40

Code No.
Standard (Built in mesh-filter) - 350 000 3404
Built in efficiency valve - 350 010 3404

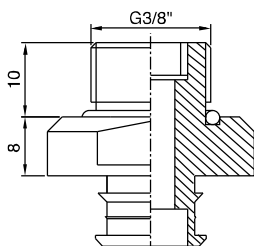
14-M



VU50
VF50
VB50
VBL50

Code No.
Standard (Built in mesh-filter) - 350 000 3405
Built in efficiency valve - 350 010 3405

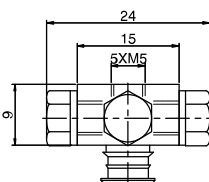
38-M



VU50
VF50
VB50
VBL50

Code No.
Standard (Built in mesh-filter) - 350 000 3505
Built in efficiency valve - 350 010 3505

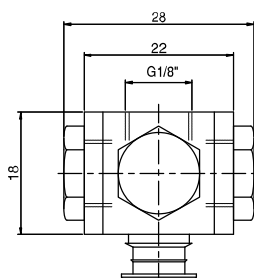
5XM5-F



VU20, VU25, VU30
VF20, VF25, VF30
VB17, VB20
VBL20

Code No.
Standard - 351 000 3110
Built in mesh-filter - 351 000 4110
Built in efficiency valve - 351 010 3110

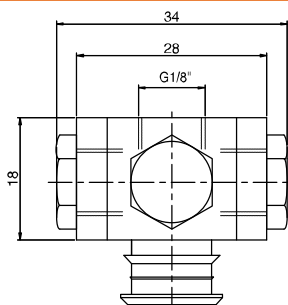
5-18-F



VU40
VF40
VB30, VB40
VBL30, VBL40

Code No.
Standard (Built in mesh-filter) - 351 000 3311
Built in efficiency valve - 351 010 3311

5-18-F

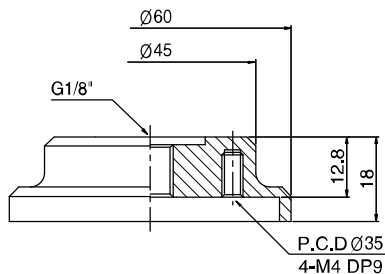


VU50
VF50
VB50
VBL50

Code No.
Standard (Built in mesh-filter) - 351 000 3312
Built in efficiency valve - 351 010 3312

Fittings (Option)

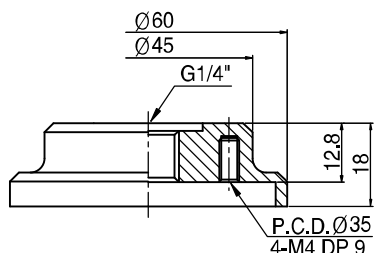
18-F



VB75
VF75
VF90
VFC90
VFC100

Code No.
(PPS) : 350 000 3313
(AL) : 350 000 3323

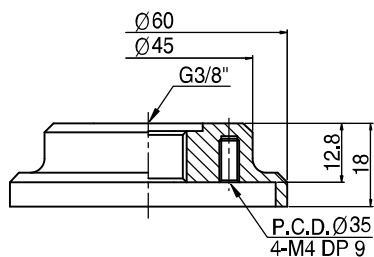
14-F



VB75
VF75
VF90
VFC90
VFC100

Code No.
(PPS) : 350 000 3413
(AL) : 350 000 3423

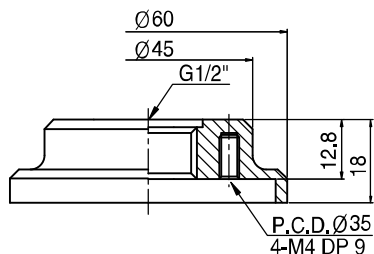
38-F



VB75
VF75
VF90
VFC90
VFC100

Code No.
(PPS) : 350 000 3513
(AL) : 350 000 3523

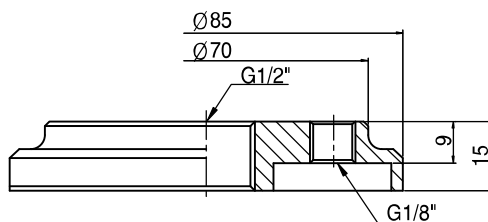
12-F



VB75
VF75
VF90
VFC90
VFC100

Code No.
(PPS) : 350 000 3613
(AL) : 350 000 3623

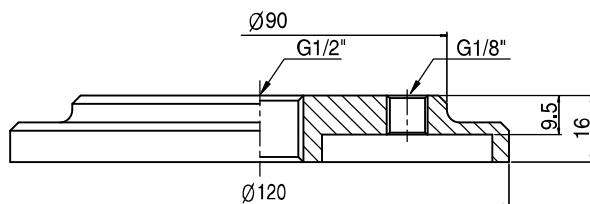
12-F



VB110
VF110

Code No. 350 000 3614

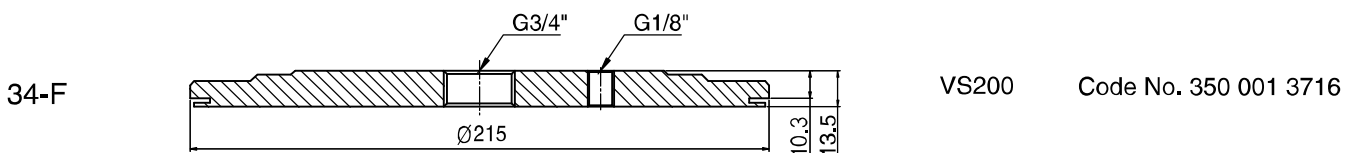
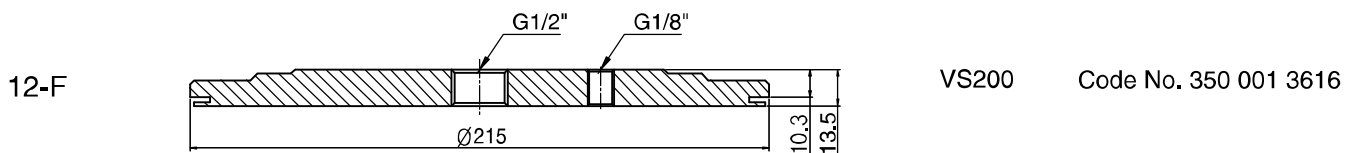
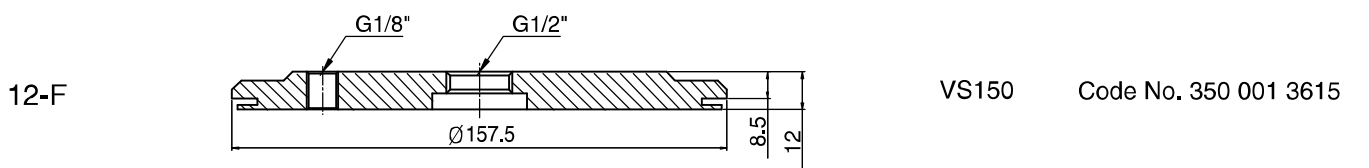
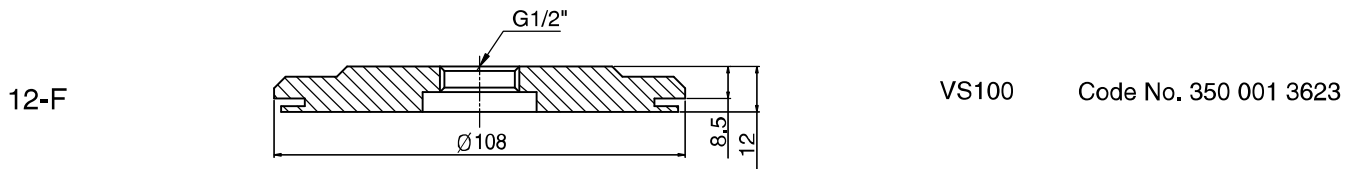
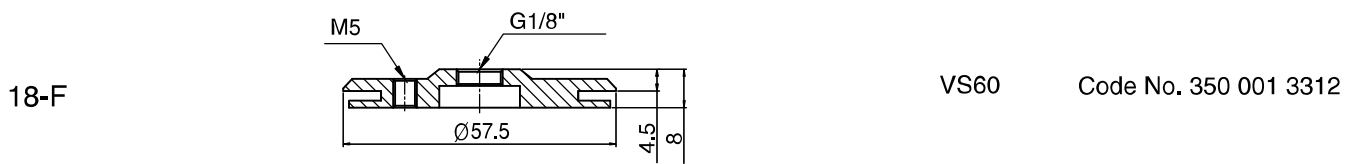
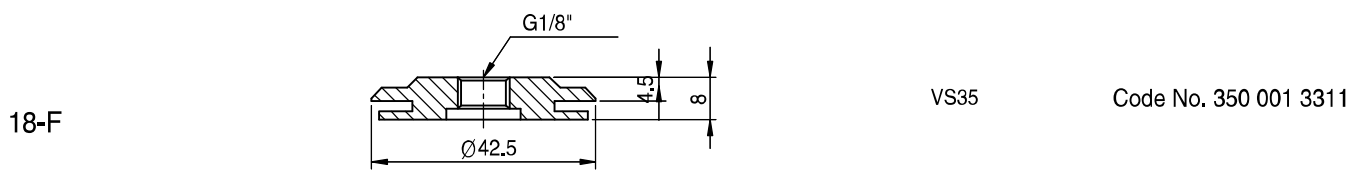
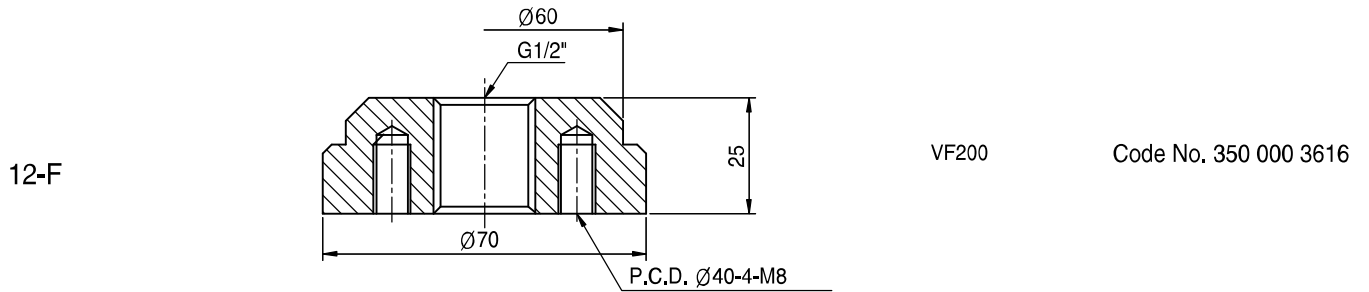
12-F



VB150
VF150

Code No. 350 000 3615

Fittings (Option)



Fittings (Option)

